

Procedure 7.14 - Replacing a Flywheel

Removing a Flywheel

1. Turn off the EFX 544 with the circuit breaker, then unplug the power cord from the wall outlet.

WARNING

Before continuing with this procedure, review the Warning and Caution statements listed in Section One, Things You Should Know.

2. Remove the rear cover as described in Procedure 7.1.
3. Remove the stair arm assembly from the flywheel that is to be removed as described in Procedure 7.21.
4. Place a 2 x 4 piece of lumber or a long-handled tool through the flywheel spoke and against the back of the rear frame upright.

Note:

When you perform the next step, use a long-handled wrench.

WARNING

Be careful not to catch your fingers in the flywheel when you perform the following steps.

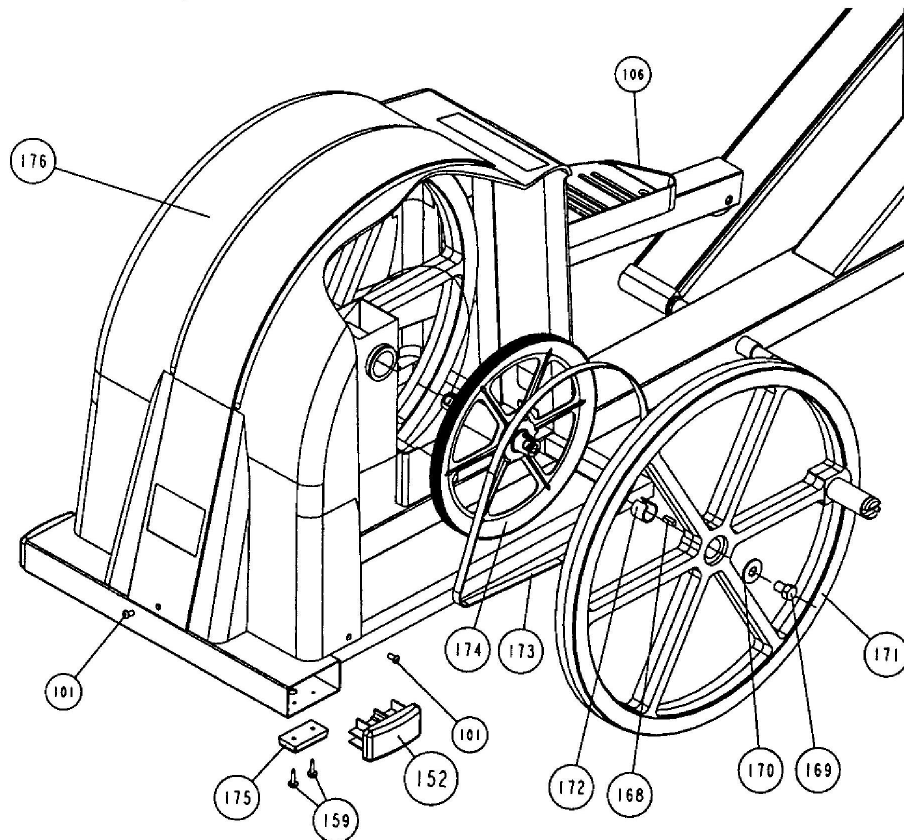
5. Remove the bolt and washer that secure the flywheel to the flywheel pulley shaft.
6. Using a rubber mallet (or a block of wood and a hammer), tap the rim of the flywheel away from the flywheel pulley. Rotate the flywheel 90 degrees, and tap the rim of the flywheel again.

WARNING

The flywheel is very heavy. Be prepared for the weight of the flywheel when it comes off of the pulley shaft.

7. Keep tapping and rotating until the flywheel comes off of the pulley shaft (see Diagram 7.6).
8. Set aside the flywheel and the square key.
9. Check the flywheel belt for wear or damage. If the belt must be replaced, install a new belt on the EFX 544 as described in Procedure 7.15.

Diagram 7.6 - EFX 544 Flywheel



Replacing a Flywheel

10. Remove the tapered bushing from the flywheel hub. Inspect the bushing for wear or damage. If the bushing must be replaced, put a new bushing in the flywheel hub.

Note:

The thin edge of the tapered bushing must go toward the inside of the hub. If the bushing is not placed correctly in the flywheel hub, the flywheel will not fit onto the flywheel pulley shaft.

11. Position the square key on the pulley shaft. Line up the slot on the flywheel with the square key. Push the flywheel onto the pulley shaft. Position two carpenter clamps, 180 degrees apart, on the flywheels. Tighten the clamps evenly, drawing the flywheel fully onto the shaft.

Note

The outer edge of the bushing must be flush with the outer edge of the flywheel hub.

12. Place the edge of a deep-well socket against the edge of the bushing. Using a rubber mallet, tap the bushing until it is flush with the flywheel hub.
13. Clean the old loc-tite off of the bolt removed in Step 5. Place a few drops of blue loc-tite onto the bolt shaft.

14. Place a 2 x 4 piece of lumber or a long-handled tool through the flywheel spoke and against the front of the rear frame upright.
15. Install the bolt and washer that secure the flywheel onto the EFX 544. Torque the bolt to 100 foot-pounds. Remove the carpenter clamps.

CAUTION

If lock tite is not used and the bolts are not correctly torqued, the bolts may work loose during normal operation.

16. Replace the stair arm assembly as described in Procedure 7.21.
17. Re-install the rear cover as described in Procedure 7.1, then check the operation of the EFX 544 as described in Section Four.